

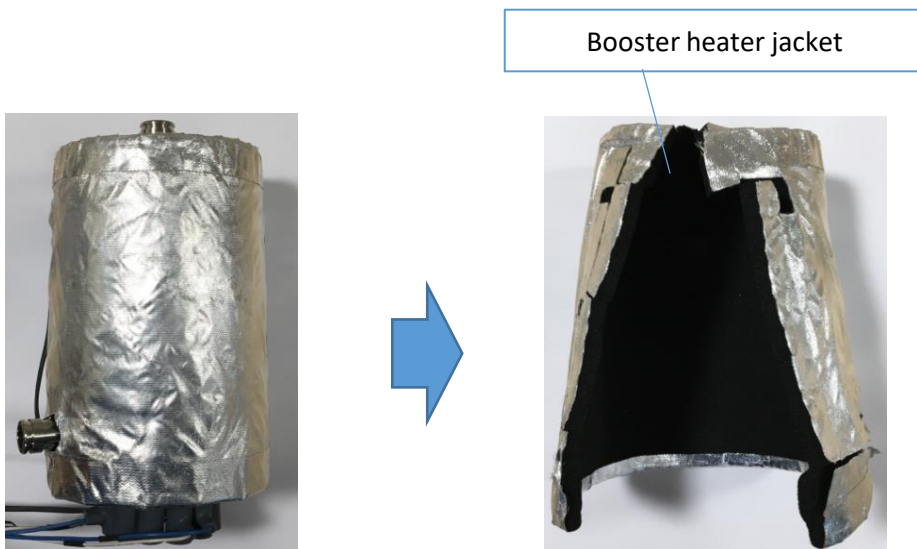
Notice to recyclers regarding booster heater jacket

When recycling the following Mitsubishi Electric models of our Air to Water systems/heat pumps manufactured in United Kingdom between June 2021 and November 2021, please first remove the booster heater jacket which is contaminated with DBP and dispose of this in an environmentally safe way.

For the concerned models please see list below.

What is a booster heater jacket:

See image. This is used to insulate a booster heater.



Concerned models:

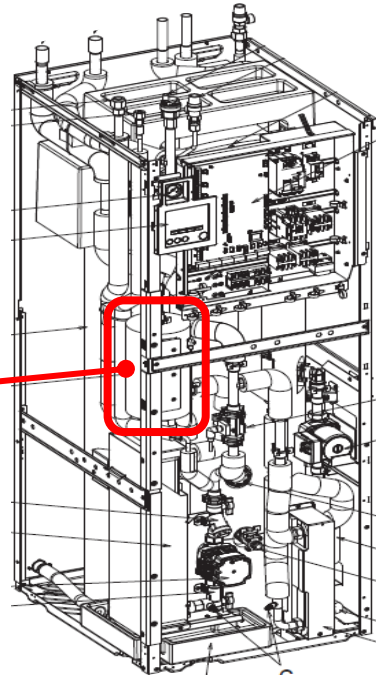
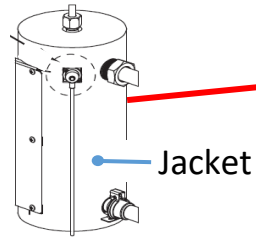
Category	Series
Air to Water Indoor Unit	EHST, ERST, EHPT, ERPT, EHGT, EHSC/D/E, ERSC/D/E, EHPX, ERPX

Where jackets located:

Air to Water Indoor unit (EHST/ERST/EHPT/ERPT/EHGT)



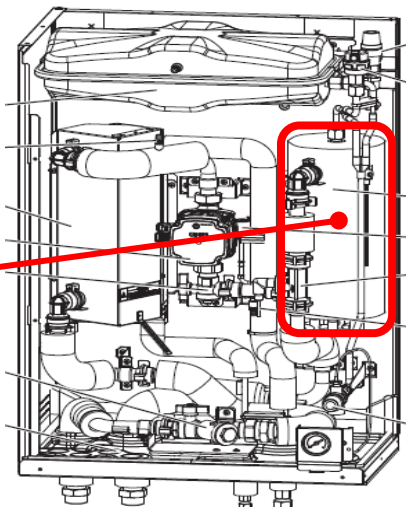
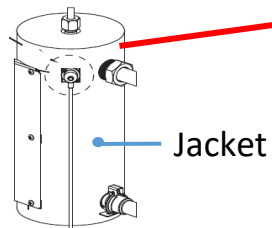
Booster heater jacket
: 1 pcs.



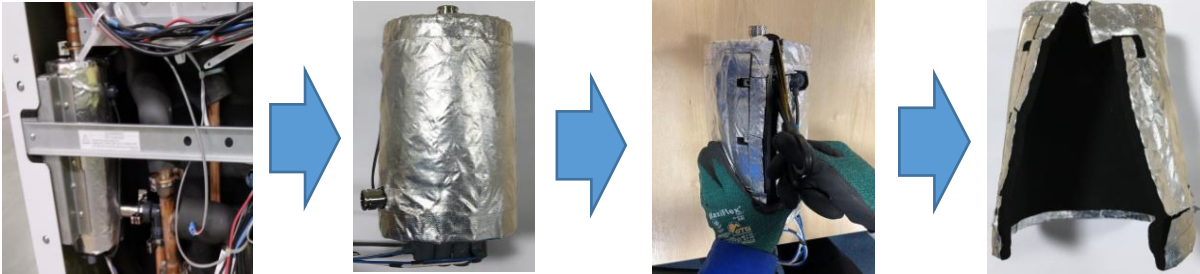
Air to Water Indoor unit (EHSD/ERSD/EHSC/ERSC/EHSE/ERSE/EHPX/ERPX)



Booster heater jacket
: 1 pcs.



How to recycle jackets



- A) Open the units
- B) Remove screws, metal parts and piping around booster heater
- C) Cut the jacket with scissors
- D) Incineration jacket

For the further information, please feel free to contact to:

RoHS2-recycling@meg.mee.com